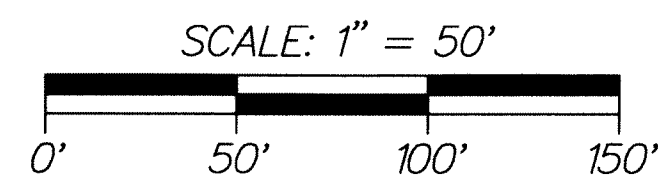


PLACE AU SOLEIL ADDITION NO. 2

BEING A PORTION OF THE NORTHEAST QUARTER (N.E.1/4) AND A PORTION OF THE SOUTHEAST QUARTER (S.E.1/4) OF SECTION 4, TOWNSHIP 46 SOUTH, RANGE 43 EAST, TOWN OF GULF STREAM, PALM BEACH COUNTY, FLORIDA

SHEET 2 OF 2

THIS INSTRUMENT WAS PREPARED BY PAUL D. ENGLE, IN THE OFFICE OF ENGLE LAND SURVEYING LLC, 955 N.W. 17TH AVENUE, SUITE K-1, DELRAY BEACH, FLORIDA 33445 (561) 276-4501



LEGEND:

CL = CENTERLINE

PRM = PERMANENT REFERENCE MONUMENT (4"x4" CONCRETE MONUMENT STAMPED "PRM LB8447") UNLESS STATED OTHERWISE

PRM (NAL) = PERMANENT REFERENCE MARKER (NAIL AND DISK STAMPED "PRM LB8447")

P.C.P. = PERMANENT CONTROL POINT (NAIL AND DISK STAMPED "PCP LB 353") UNLESS STATED OTHERWISE

PRP.B.C.O. = PUBLIC RECORDS OF PALM BEACH COUNTY

SECTION 4/46/43 = SECTION 4, TOWNSHIP 46 SOUTH, RANGE 43 EAST

G.U.E. = GENERAL UTILITY EASEMENT

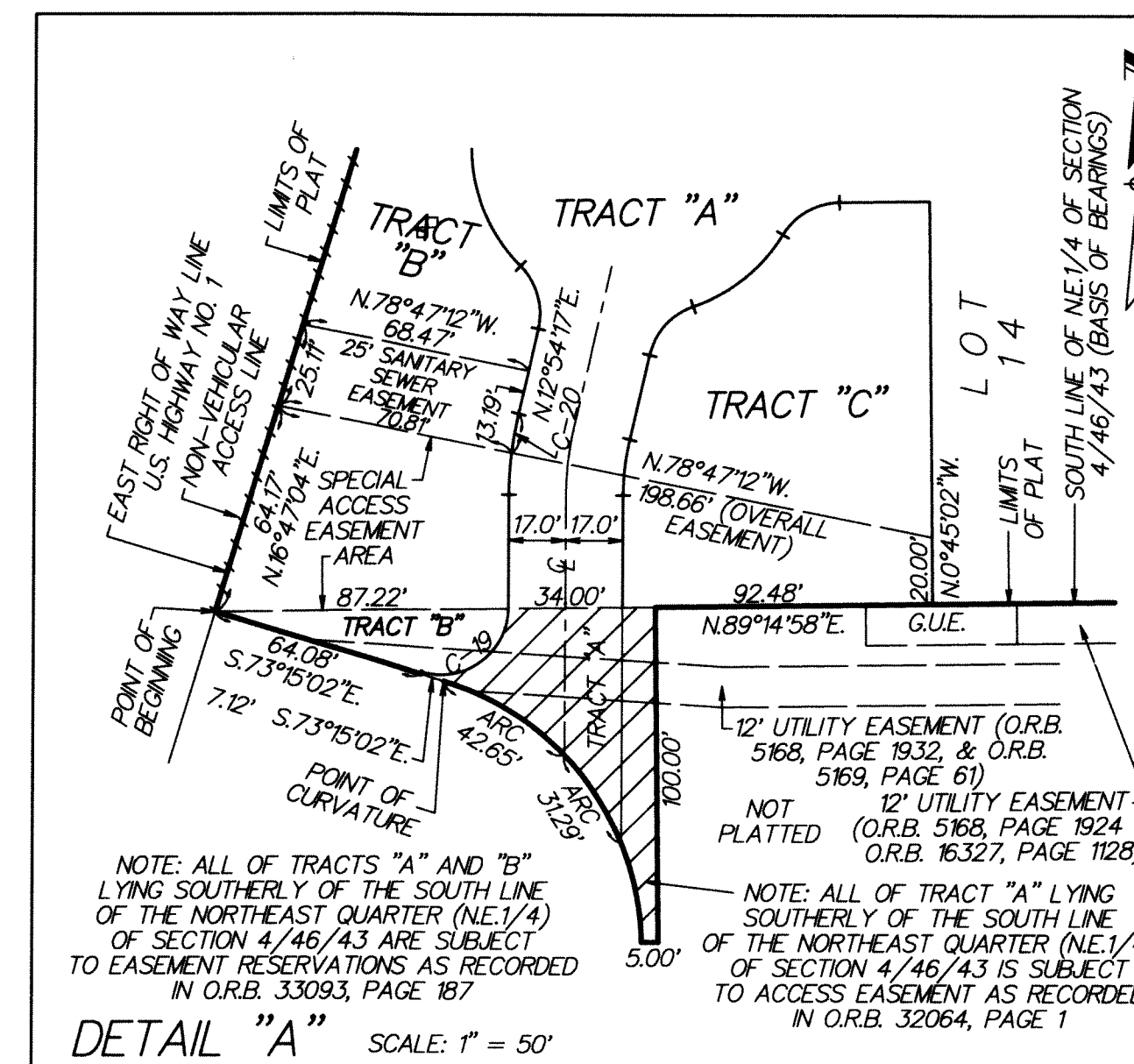
SQ. FT. = SQUARE FOOT

O.R.B. = OFFICIAL RECORDS BOOK

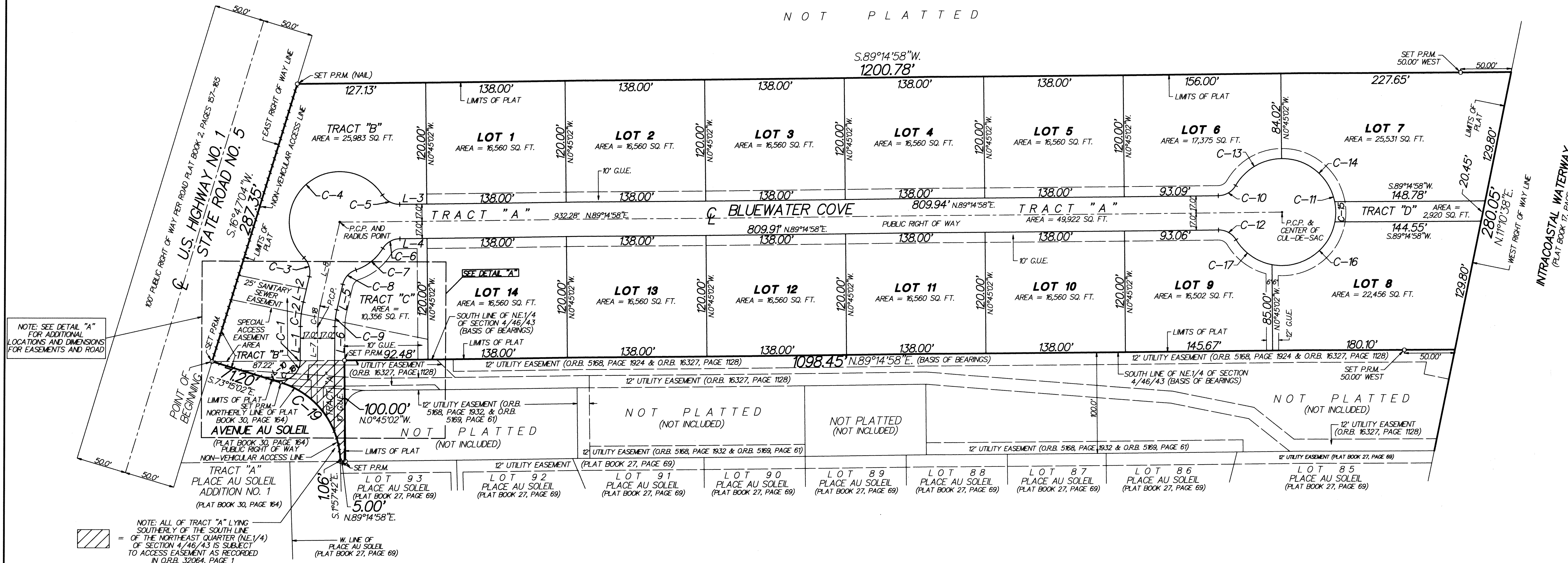
L.B. = LICENSED BUSINESS

| LINE NUMBER | LENGTH | BEARING |
|-------------|---------|---------------|
| L-1 | 33.75' | N.00°03'46"E. |
| L-2 | 25.88' | N.12°54'17"E. |
| L-3 | 26.85' | N.89°14'58"E. |
| L-4 | 26.85' | S.89°14'58"W. |
| L-5 | 25.88' | S.12°54'17"W. |
| L-6 | 103.65' | S.00°03'46"W. |
| L-7 | 77.58' | N.00°03'46"E. |
| L-8 | 85.30' | N.12°54'17"E. |
| L-9 | 70.19' | N.00°03'46"E. |
| L-10 | 0.67' | N.16°44'58"E. |

| CURVE NUMBER | CENTRAL ANGLE | RADIUS | ARC LENGTH | CHORD BEARING |
|--------------|---------------|---------|------------|---------------|
| C-1 | 00°33'04" | 20.00' | 0.19' | N.00°20'17"E. |
| C-2 | 12°50'31" | 109.00' | 24.43' | N.06°29'01"E. |
| C-3 | 58°05'28" | 20.00' | 20.28' | N.16°08'27"W. |
| C-4 | 19°31'37" | 50.00' | 168.01' | N.51°04'38"E. |
| C-5 | 58°05'28" | 20.00' | 20.28' | S.61°42'18"E. |
| C-6 | 58°05'28" | 20.00' | 20.28' | S.60°12'14"W. |
| C-7 | 39°50'14" | 50.00' | 34.76' | S.51°04'38"W. |
| C-8 | 58°05'28" | 20.00' | 20.28' | S.41°57'01"W. |
| C-9 | 12°50'31" | 75.00' | 16.81' | S.06°29'01"W. |
| C-10 | 59°31'38" | 20.00' | 20.78' | N.59°29'09"E. |
| C-11 | 299°05'30" | 53.00' | 276.67' | S.00°43'55"E. |
| C-12 | 59°33'52" | 20.00' | 20.79' | N.60°58'06"W. |
| C-13 | 59°31'29" | 53.00' | 55.06' | N.59°29'04"E. |
| C-14 | 79°06'17" | 53.00' | 73.17' | S.51°12'03"E. |
| C-15 | 21°45'05" | 53.00' | 20.12' | S.00°46'22"E. |
| C-16 | 90°23'19" | 53.00' | 83.61' | S.55°17'50"W. |
| C-17 | 48°19'20" | 53.00' | 44.70' | N.55°20'51"W. |
| C-18 | 105°49'42" | 20.00' | 36.94' | N.53°31'40"E. |
| C-19 | 71°17'20" | 83.12' | 103.42' | S.37°36'22"E. |
| C-20 | 06°12'54" | 109.00' | 11.82' | N.09°47'50"E. |



NOT PLATTED



41